

WEDGE RD. SKYE

Complimentary Front Garden
Landscape Packages

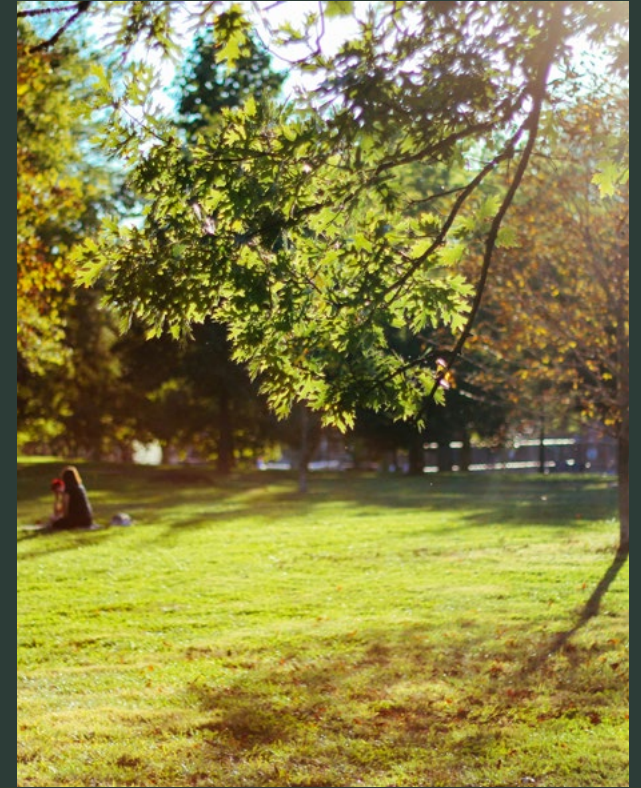


Space to explore, live & grow.

Come home to a location that will soon become the area's most desired community. Live in balance being surrounded by natural green outlook while remaining close to local urban amenities.

At Wedge Rd. you can create a home that fits your lifestyle with a diverse range of land sizes and contemporary home designs from some of Melbourne's most trusted & leading builders.





Designer landscapes

To ensure your front garden is as beautiful as the rest of Wedge Rd. Skye, we're offering complimentary front lot landscaping. Wedge Rd. Skye's complimentary front lot landscaping packages feature the latest garden designs and trends.

Select your landscape package.

Free landscape packages are available to help you create a streetscape you can be proud of. Our landscape architects have used the existing and striking natural surrounds of Skye to inspire the following four arrangements, perfectly suited for your new home.

TYPE 1

Native



TYPE 2

Classic



TYPE 3

Modern



TYPE 4

Natural



TYPE 1

Native

Native gardens are a beautiful and sustainable option, featuring stunning plants such as Banksia, Yellow Buttons, Flax-Lily, and Bottlebrush trees. This garden supports local wildlife and requires low maintenance while providing year-round interest with its unique foliage, colorful flowers, and attractive ground cover.

Trees

Shrubs

Ground Cover

Pavement



Coastal Banksia



Yellow Buttons



Woolly Bush



Blue Flax-Lily



Gravel



Landscape Rock



Bottlebrush

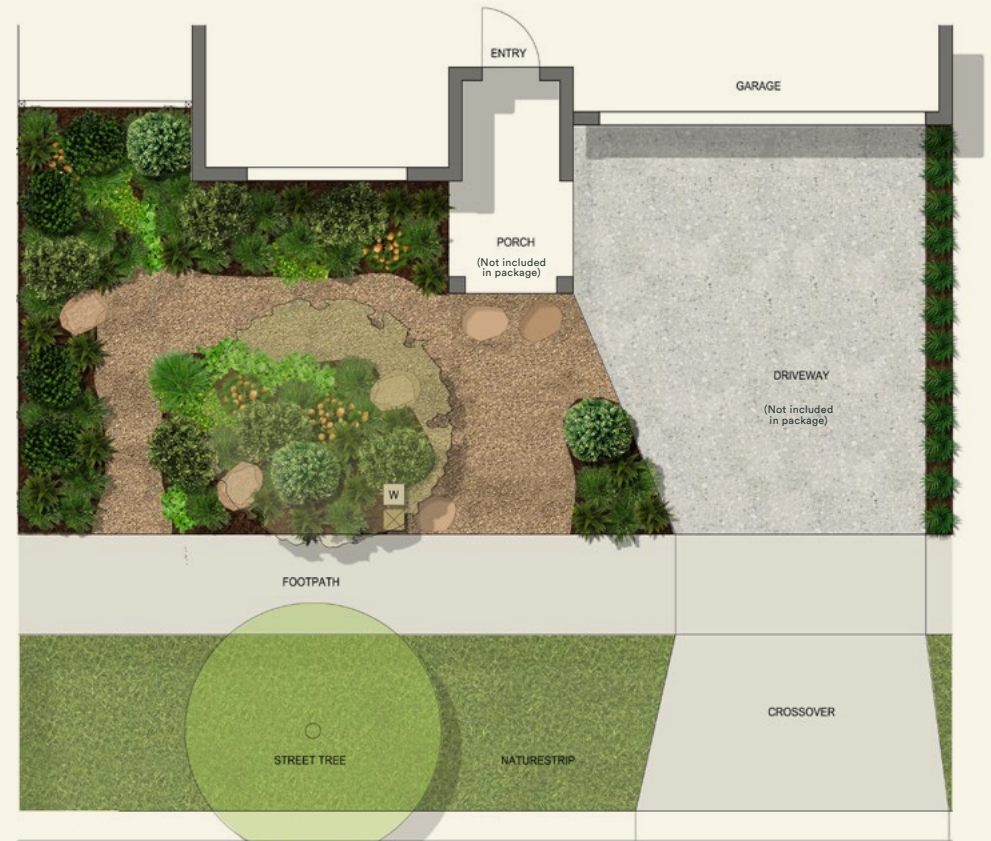


Creeping Boobialla



Birthday Candles Banksia

Additional plant species available.



Artist impression only.

KEY



Proposed Tree



Street Tree



Landscape Rock



Water Metre



Letterbox

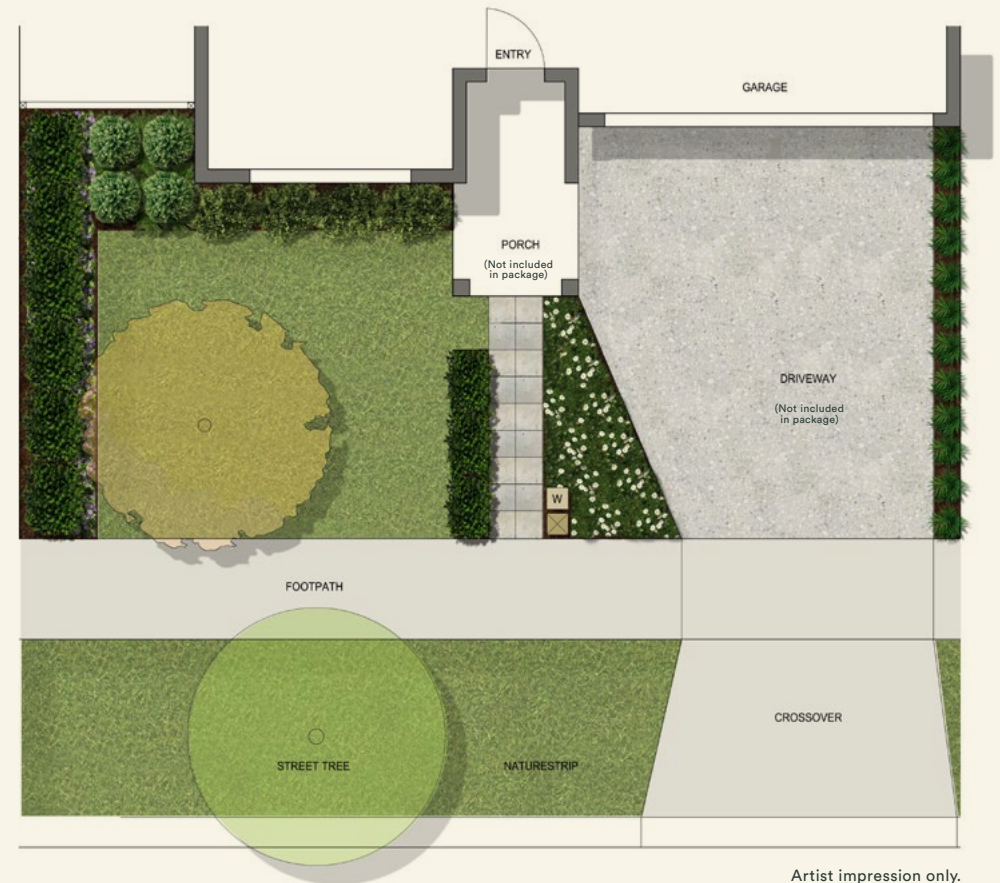
TYPE 2

Classic

Classic gardens are a timeless and elegant blend of native and introduced plants, featuring lush lawns, ornamental shrubs, flowering trees, and colorful flowers. This versatile garden style can adapt to various climates and soil types, making it an excellent choice for any gardener.





Trees	Shrubs	Ground Cover	Pavement
 Dwarf Magnolia	 Renga Renga Lily	 Silver Bush	 Perennial Statice
 Lawn	 Stepping Stone		
 Ornamental Pear	 Indian Hawthorn	 Native Rosemary	

Additional plant species available.



Artist impression only.

KEY

-  Proposed Tree
-  Street Tree
-  Water Metre
-  Letterbox

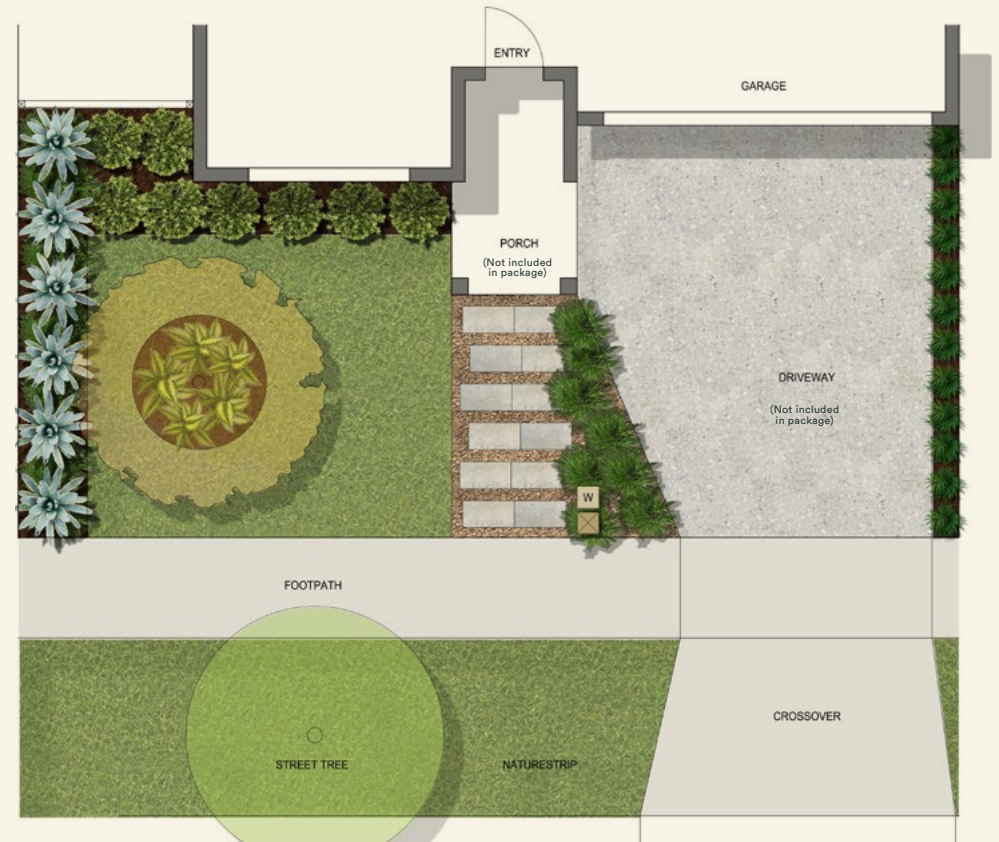
TYPE 3

Modern

Modern gardens are a stylish and sustainable choice that blends minimalist design with low-maintenance plants like succulents and native grasses. This garden style is perfect for the eco-conscious gardener seeking a functional and fashionable outdoor space.





Trees	Shrubs	Ground Cover	Pavement
 Autumn Blaze Maple	 Century Plant	 Lawn	 Stepping Stone
 Silver Princess Gum	 Safari Sunset Leucadendron	 Gravel	
 She-Oak	 Blue Fescue		
	 Sundowner New Zealand Flax		

Additional plant species available.



Artist impression only.

KEY

-  Proposed Tree
-  Street Tree
-  Water Metre
-  Letterbox

TYPE 4

Natural

Natural gardens are an authentic and stunning option that recreates Australia's unique environment. This garden provides a habitat for local wildlife and requires minimal maintenance. A natural Australian garden is perfect for nature lovers seeking a sustainable and harmonious outdoor space.

Trees

Shrubs

Ground Cover

Pavement



Dwarf Yellow Gum



White Correa



Dwarf Hot Poker



Society Garlic



Mulch



Landscape Rock



Water Gum

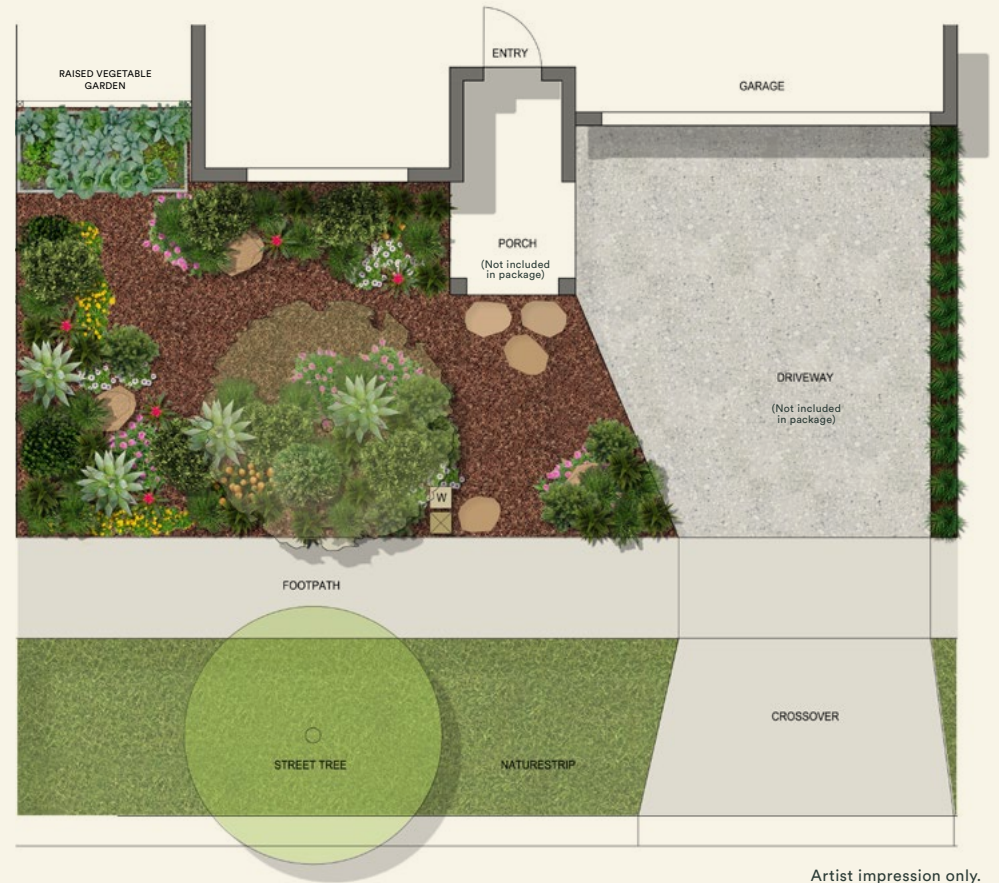


Blue Chalksticks



Common Tussock Grass

Additional plant species available.



KEY



Proposed Tree



Street Tree



Landscape Rock



Water Metre



Letterbox

Artist impression only.

Additional options.

In addition to the selected range of trees, shrubs and grasses in the examples shown, the following extensive list of options are also available to further customise your chosen landscape package to create a truly unique garden.

Type 1 Native

Trees

- Acacia Melanoxydon (Blackwood)
- Banksia Integrifolia (Coastal Banksia)
- Callistemon 'Kings Park Special' (Bottlebrush)
- Corymbia Ficifolia (Red Flowering Gum)

Shrubs, Groundcovers & Grasses

- Adenanthus Sericea (Woolly Bush)
- Anigozanthus 'Big Red' (Red Kangaroo Paw)
- Banksia Spinulosa 'Birthday Candles' (Birthday Candles Banksia)
- Callistemon Viminalis 'Little John' (Little John Bottlebrush)
- Chrysocephalum Apiculatum (Yellow Buttons)
- Correa Alba (White Correa)
- Dianella Revoluta (Blue Flax-Lily)
- Grevillea Juniperina 'Gold Cluster' (Gold Cluster Grevillea)
- Leucophyta Brownii (Cushion Bush)
- Lomandra Longifolia 'Tanika' (Tanika Mat Rush)
- Myoporum Parvifolium (Creeping Boobialla)
- Ophiopogon Japonicus (Mondo Grass)
- Viola Hederacea (Native Violet)

Type 2 Classic

Trees

- Lagerstroemia Indica (Crepe Myrtle)
- Magnolia Grandiflora 'Teddy Bear' (Teddy Bear Magnolia)
- Olea Europaea 'Swan Hill' (Swan Hill Olive)
- Pyrus Calleryana 'Cleveland Select' (Ornamental Pear)

Shrubs, Groundcovers & Grasses

- Arthropodium Cirratum (Renga Renga Lily)
- Brachyscome Multifida (Cut Leaf Daisy)
- Convolvulus Cneorum (Silver Bush)
- Dietes Grandiflora (Wild Iris)
- Escallonia 'Pink Pixie' (Dwarf Escallonia)
- Lavandula Dentata (Lavender)
- Limonium Perezii (Perennial Statice)
- Liriope Giganteum (Evergreen Giant)
- Lomandra Longifolia 'Tanika' (Tanika Mat Rush)
- Ophiopogon Japonicus (Mondo Grass)
- Pennisetum Alopecuroides (Fountain Grass)
- Phlomis Fruticosa (Jerusalem Sage)
- Rhamphiolepis Indica 'Snow Maiden' (Indian Hawthorn)
- Rosa 'White Flower Carpet' (White Groundcover Rose)
- Salvia Leucantha (Mexican Sage)
- Stachys Byzanthia (Lambs Ear)
- Westringia Fruticosa (Native Rosemary)

Type 3 Modern

Trees

- Acer Freemanii 'Autumn Blaze' (Autumn Blaze Maple)
- Agonis Flexuosa 'Burgandy' (Burgandy Willow Myrtle)
- Eucalyptus Caesia 'Silver Princess' (Silver Princess Gum)
- Eucalyptus Leucoxydon 'Euky Dwarf' (Dwarf Yellow Gum)
- Hymenosporum Flavum (Native Frangipani)

Shrubs, groundcovers & grasses

- Acacia Cognata 'Mini Cog' (Mini Cog Wattle)
- Agave Attenuata (Century Plant)
- Beschorneria Yuccoides (Mexican Lily)
- Casuarina Glauca 'Cousin It' (She-Oak)
- Correa Alba (White Correa)
- Doryanthes Excelsa (Gynea Lily)
- Festuca Glauca 'Elijah Blue' (Blue Fescue)
- Hebe Speciosa Diosmifolia 'Inspiration' (New Zealand Hebe)
- Leucadendron 'Safari Sunset' (Safari Sunset Leucadendron)
- Leucadendron 'Yellow Devil' (Yellow Devil Leucadendron)
- Lomandra Longifolia 'Tanika' (Tanika Mat Rush)
- Ophiopogon Japonicus (Mondo Grass)
- Pennisetum Alopecuroides 'Purple Lea' (Swamp Foxtail Grass)
- Phormium Tenax 'Sundowner' (Sundowner New Zealand Flax)
- Poa Labillardierei (Common Tussock Grass)
- Sedum Telephium 'Matrona' (Autumn Stonecrop)
- Senecio Repens (Blue Chalksticks)
- Strelizia Regina (Bird Of Paradise)

Type 4 Natural

Trees

- Brachychiton Rupestris (Queensland Bottle Tree)
- Corymbia Ficifolia (Red Flowering Gum)
- Eucalyptus Leucoxydon 'Euky Dwarf' (Dwarf Yellow Gum)
- Hymenosporum Flavum (Native Frangipani)
- Tristaniopsis Laurina (Water Gum)

Shrubs, groundcovers & grasses

- Agave Geminiflora (Twin Flowered Agave)
- Mesembryanthemum Cordifolium (Baby Sun Rose)
- Chrysocephalum Apiculatum (Yellow Buttons)
- Correa Alba (White Correa)
- Dianella Revoluta (Blue Flax Lily)
- Gazania Tomentosa (Silver Leaf Gazania)
- Goodenia Ovata (Hop Goodenia)
- Kniphofia Poco Yellow (Dwarf Hot Poker)
- Leucadendron 'Yellow Devil' (Yellow Devil Leucadendron)
- Lomandra Longifolia 'Tanika' (Tanika Mat Rush)
- Ophiopogon Japonicus (Mondo Grass)
- Poa Labillardierei (Common Tussock Grass)
- Scaevola Albida 'Mauve Carpet' (Fan Flower)
- Senecio Repens (Blue Chalksticks)
- Tulbaghia Violacea (Society Garlic)
- Viola Hederacea (Native Violet)





WEDGE RD.
SKYE

*Market Value of landscaping is dependent on size of lot purchased and based on the retail value of the landscaping offered. The package excludes driveways, boundary fencing, retaining walls, removal of all rubbish and vegetation. The package also excludes footpaths, turf to nature strip, letterbox, outdoor lighting or any maintenance of the landscaping after completion other than the free maintenance period to help establish your garden. The artist illustrations show mature gardens. These have been provided to assist purchasers to choose a garden type. The images may not accurately depict the garden on initial installation. Subject to terms and conditions as set out in the contract of sale.